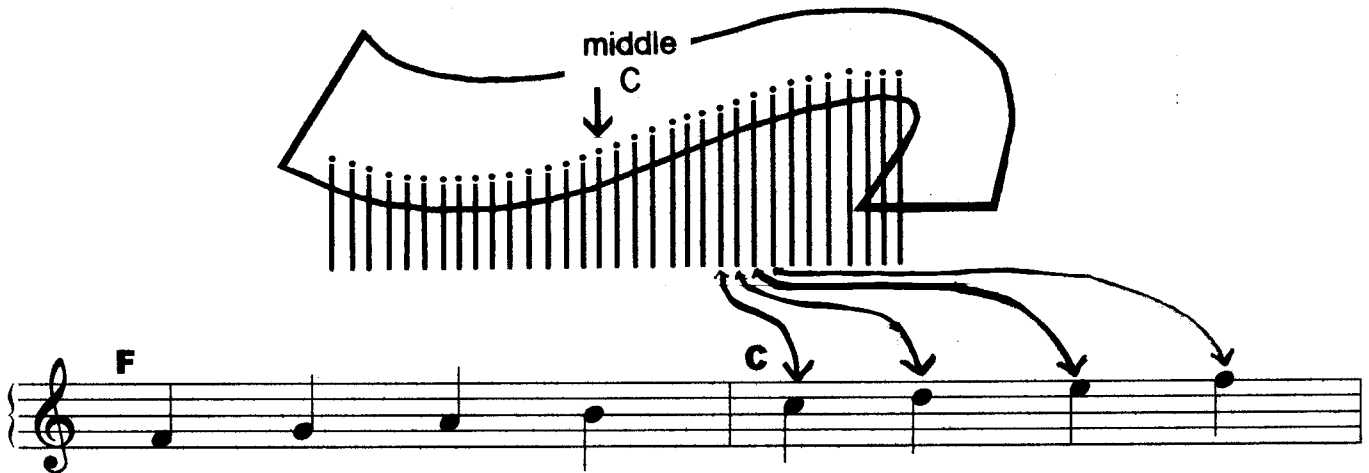
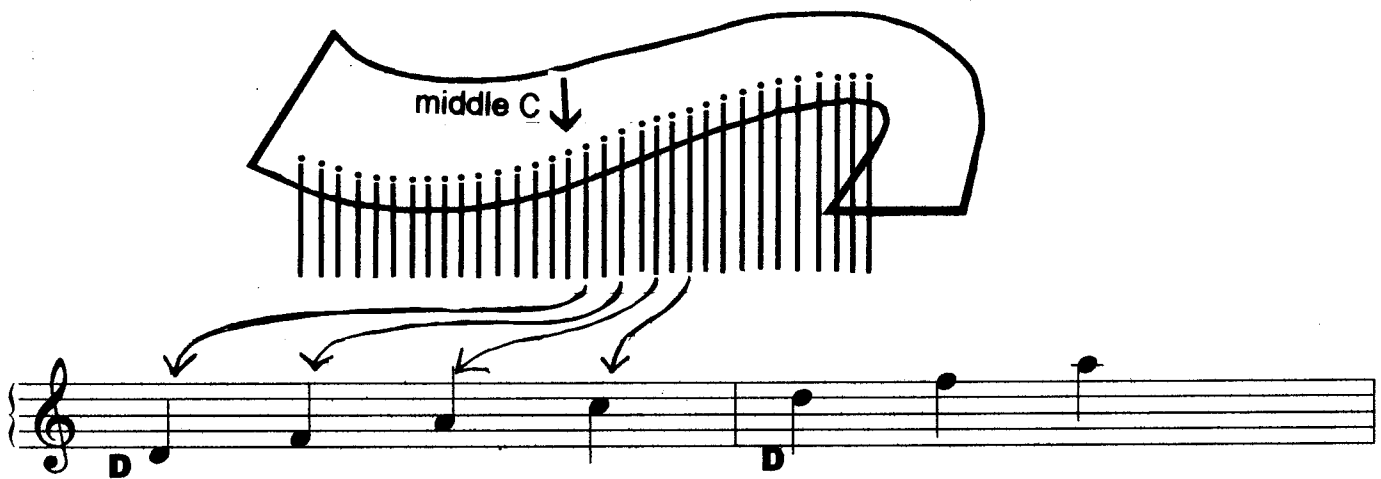


Ledger Lines,
neighbor notes + every other notes

Get your harp and follow these guide lines for working out what the ledger line notes are.
Once you find the pattern - you will have no trouble understanding how it works then it
will just be a matter of practicing reading the ledger lines.



This is what "neighbor notes" look like on your harp! Notice how the notes are all right next to each other on your harp. They are space, line, space, line etc.



This is "every other notes" look like on your harp! Notice how the notes are every other string + every other line OR space on the staff.